



## Bellwether Magazine

---

Volume 1  
Number 71 *Fall 2009*

Article 11

---

10-1-2009

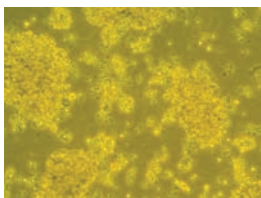
### Research Briefs

---

This paper is posted at ScholarlyCommons. <http://repository.upenn.edu/bellwether/vol1/iss71/11>  
For more information, please contact [libraryrepository@pobox.upenn.edu](mailto:libraryrepository@pobox.upenn.edu).

## The Role of NF-kappaB

Basic and translational researchers **Dr. Michael May** and **Dr. Nicola Mason** are working together to evaluate the role of NF-kappaB in canine cancer development and the potential therapeutic use of NBD peptide in the treatment of canine cancer.



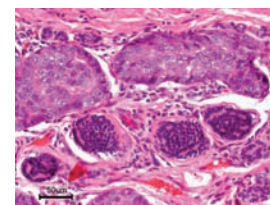
NF-kappaB effects the regulation of genes linked to immune responses, differentiation, cell growth, and the death of cells. It is found in many solid tumors where it contributes to reproduction of malignant cells and resistance to chemotherapy of malignant cells.

This work has provided the basis for a Phase I clinical trial to evaluate the effects of NBD peptide on NF-kappaB activity in dogs with relapsed, drug-resistant lymphoma. Further details of the clinical trial can be found at <http://research.vet.upenn.edu/vcic>.

While this trial is specifically for canine patients with lymphoma, the clinical, biological and genetic similarities between canine lymphoma and Non-Hodgkin's lymphoma (NHL) in humans indicates that findings in dogs may provide valuable information for humans with NHL.

## Penn Shelter Canine Mammary Tumor Program

A team of clinicians at the Matthew J. Ryan Veterinary Hospital led by **Dr. Karin Sorenmo, Dr. Michael Goldschmidt, Dr. David Holt** and **Dr. Michael Moyer, V<sup>90</sup>**, Rosenthal Director of Penn's Shelter Medicine Program, received funding from Reid and Krista Buerger to study similarities between canine mammary tumors and breast cancer in women.



Mammary gland tumors remain the most common tumors in intact female dogs and represent a common cause of disease and premature death in dogs around the world. Studies have identified many similarities between canine mammary tumors and breast cancer in women in terms of epidemiology, biology, dietary risk factors and clinical behavior, as well as hormonal association. The development of mammary tumors in dogs is dependent on exposure to ovarian hormones and the tumor risk can be significantly reduced by spaying at an early age. The risk for developing breast cancer in women is also associated with the cumulative exposure to bio-available estrogens, suggesting that similar hormone-driven mechanisms might be linked with breast cancer development in both species. ♡

# With Wise and Thoughtful Planning, We All Have the Power to Make History

## Gifts that fund the future of Penn Veterinary Medicine

Plan a gift today that can provide for the future of Penn by including a charitable bequest as part of your long term planning. It's as easy as naming Penn Vet as a beneficiary of your will, retirement plan or life insurance policy.

### Benefits of a Bequest Include:

- Establishes a lasting legacy
- Enables you to make a significant contribution that may otherwise not have been possible during your lifetime
- The value of the estate intention is removed from your taxable estate

Most importantly, it offers the satisfaction of knowing your commitment will truly make a difference for the future of Penn Vet.

If you have already included Penn as part of your estate plan, or if you would like information on ways to do so, contact:  
Lynn Ierardi, J.D.  
800.223.8236  
lierardi@dev.upenn.edu  
[www.upenn.planyourlegacy.org](http://www.upenn.planyourlegacy.org)

Your gift qualifies you for membership in the Charles Custis Harrison Society.



Office of Gift Planning  
*Helping You Make a Difference*