

Bellwether

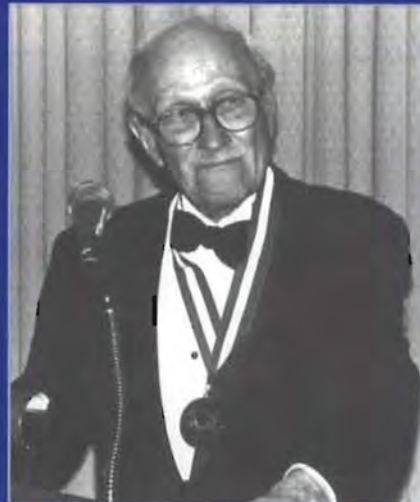
University of Pennsylvania

Spring 1998

42

Mark W. Allam Lila G. Allam

This special issue of *Bellwether* is dedicated to the memory of Mark Allam and his dear wife Lila who both passed away this spring. Lila died on March 7 and Mark followed her on April 28. A memorial service, originally planned for Lila, was held for the two of them at New Bolton Center on Thursday,



April 30. It was a heartwarming celebration in the style of Friends. Many came, but, due to the short



notice, there were many more who were unable to attend. Consequently, we share the thoughts expressed about this beloved couple at the service together with tributes that have been sent to the School.

Special Memorial Issue