



August 2006

Impaired Notch Signaling Promotes *De novo* Squamous Cell Carcinoma Formation

Aaron Proweller
University of Pennsylvania

Lili Tu
University of Pennsylvania

John J. Lepore
University of Pennsylvania, john.lepore@uphs.upenn.edu

Lan Cheng
University of Pennsylvania, lancheng@mail.med.upenn.edu

Min Min Lu
University of Pennsylvania

See next page for additional authors

Follow this and additional works at: http://repository.upenn.edu/ime_papers

Proweller, Aaron; Tu, Lili; Lepore, John J.; Cheng, Lan; Lu, Min Min; Seykora, John J.; Millar, Sarah E.; Pear, Warren S.; and Parmacek, Michael S., "Impaired Notch Signaling Promotes *De novo* Squamous Cell Carcinoma Formation" (2006). *Institute for Medicine and Engineering Papers*. 28.
http://repository.upenn.edu/ime_papers/28

Reprinted from *Cancer Research*, Volume 66, Issue 15, August 1 2006, pages 7438-44.
Publisher URL: <http://cancerres.aacrjournals.org/cgi/reprint/66/15/7438.pdf>

This paper is posted at ScholarlyCommons. http://repository.upenn.edu/ime_papers/28
For more information, please contact libraryrepository@pobox.upenn.edu.

Impaired Notch Signaling Promotes *De novo* Squamous Cell Carcinoma Formation

Abstract

Signaling through Notch receptors in the skin has been implicated in the differentiation, proliferation, and survival of keratinocytes, as well as in the pathogenesis of basal cell carcinoma (BCC). To determine the composite function of Notch receptor-mediated signaling in the skin and overcome potential redundancies between receptors, conditional transgenic mice were generated that express the pan-Notch inhibitor, dominant-negative *Mastermind Like 1* (DNMAML1), to repress all canonical [CBF-1/Suppressor of hairless/LAG-1 (CSL)-dependent] Notch signaling exclusively in the epidermis. Here, we report that DNMAML1 mice display hyperplastic epidermis and spontaneously develop cutaneous squamous cell carcinoma (SCC) as well as dysplastic precursor lesions, actinic keratoses. Mice expressing epidermal DNMAML1 display enhanced accumulation of nuclear β -catenin and cyclin D1 in suprabasilar keratinocytes and in lesional cells from SCCs, which was also observed in human cutaneous SCC. These results suggest a model wherein CSL-dependent Notch signaling confers protection against cutaneous SCC. The demonstration that inhibition of canonical Notch signaling in mice leads to spontaneous formation of SCC and recapitulates the disease in humans yields fundamental insights into the pathogenesis of SCC and provides a unique *in vivo* animal model to examine the pathobiology of cutaneous SCC and for evaluating novel therapies.

Comments

Reprinted from *Cancer Research*, Volume 66, Issue 15, August 1 2006, pages 7438-44.
Publisher URL: <http://cancerres.aacrjournals.org/cgi/reprint/66/15/7438.pdf>

Author(s)

Aaron Proweller, Lili Tu, John J. Lepore, Lan Cheng, Min Min Lu, John J. Seykora, Sarah E. Millar, Warren S. Pear, and Michael S. Parmacek

Impaired Notch Signaling Promotes *De novo* Squamous Cell Carcinoma Formation

Aaron Proweller,^{3,4} Lili Tu,^{1,2,5} John J. Lepore,^{3,4} Lan Cheng,^{3,4} Min Min Lu,^{3,4} John Seykora,⁶ Sarah E. Millar,⁶ Warren S. Pear,^{1,2,5} and Michael S. Parmacek^{3,4}

¹Abramson Family Cancer Research Institute, ²Institute for Medicine and Engineering, ³Cardiovascular Institute, and ⁴Departments of Medicine, ⁵Pathology and Laboratory Medicine, and ⁶Dermatology, University of Pennsylvania, Philadelphia, Pennsylvania

Abstract

Signaling through Notch receptors in the skin has been implicated in the differentiation, proliferation, and survival of keratinocytes, as well as in the pathogenesis of basal cell carcinoma (BCC). To determine the composite function of Notch receptor-mediated signaling in the skin and overcome potential redundancies between receptors, conditional transgenic mice were generated that express the pan-Notch inhibitor, dominant-negative Mastermind Like 1 (DNMAML1), to repress all canonical [CBF-1/Suppressor of hairless/LAG-1 (CSL)-dependent] Notch signaling exclusively in the epidermis. Here, we report that DNMAML1 mice display hyperplastic epidermis and spontaneously develop cutaneous squamous cell carcinoma (SCC) as well as dysplastic precursor lesions, actinic keratoses. Mice expressing epidermal DNMAML1 display enhanced accumulation of nuclear β -catenin and cyclin D1 in suprabasilar keratinocytes and in lesional cells from SCCs, which was also observed in human cutaneous SCC. These results suggest a model wherein CSL-dependent Notch signaling confers protection against cutaneous SCC. The demonstration that inhibition of canonical Notch signaling in mice leads to spontaneous formation of SCC and recapitulates the disease in humans yields fundamental insights into the pathogenesis of SCC and provides a unique *in vivo* animal model to examine the pathobiology of cutaneous SCC and for evaluating novel therapies. (Cancer Res 2006; 66(15): 7438-44)

Introduction

Notch signaling regulates multiple cellular processes, including differentiation, proliferation, and cell fate decisions, required for organogenesis and tissue homeostasis (for review, see refs. 1, 2). Notch receptor-mediated signaling is cell type dependent and developmentally regulated, underscoring the importance of other molecular pathways that modulate activity of this signaling pathway (3, 4). In mammals, there are four transmembrane Notch receptors (Notch1-Notch4) that are activated via binding ligands of the *Delta* and *Jagged* families. In the canonical Notch signaling pathway, Notch receptor stimulation results in cleavage of the Notch intracellular domain, which translocates to the nucleus and forms a ternary complex with the transcriptional coactivator, mastermind-like (MAML) protein, as well as the DNA-binding protein, CSL, which directs DNA-binding specificity and ultimately

target gene expression (5). To date, only a limited number of Notch target genes have been identified and characterized, including basic-helix-loop-helix proteins of the hairy and enhancer of split (*Hes*) and Hes-related transcription factor (*Hrt*) families, which generally act as transcriptional repressors (6).

Notch receptors are expressed in the skin, although their precise function(s) remain uncertain (for review, see ref. 7). In keratinocytes, activated Notch1 induces p21 expression in a CSL-dependent manner, leading to cell cycle withdrawal and terminal differentiation (8). In addition, Notch1 directly activates caspase 3, which is required for terminal differentiation of embryonic keratinocytes (9). Consistent with its role in promoting differentiation of keratinocytes, mice with an induced epidermal deletion of the *Notch1* gene exhibit extensive epidermal hyperplasia and spontaneously develop cutaneous basal cell carcinoma (BCC; ref. 10). This finding led investigators to propose that, in the skin, Notch1 acts as a tumor suppressor (10, 11). Moreover, in mice with conditional epidermal inactivation of Notch1, chemical injury induced the formation of cutaneous lesions resembling both BCC and squamous cell carcinoma (SCC), in addition to inducing numerous papillomas (10).

Neoplasms originating from cutaneous epithelial cells, including BCC and SCC, are the most common cancers in the United States with annual incidences of nearly 1 million and 250,000 cases, respectively (reviewed in refs. 12-14). Unlike BCC, SCCs are biologically aggressive, arise from precursor lesions (actinic keratoses), and display metastatic potential with frequencies approaching 12.5%. Mutations in components of the sonic hedgehog (SHH) signaling pathway have been implicated in the etiology of both human and mouse BCC (15-18). By contrast, genetic mutations uniquely causing human SCC have not been identified (17). Understanding the role of Notch signaling in BCC and chemically induced SCC is fundamentally important, given the dramatic differences in the pathobiology and clinical manifestations of these common cutaneous malignancies.

To better understand the role of Notch1-4 receptor signaling in the skin, we generated mice expressing a dominant negative MAML1 (DNMAML1) protein to inhibit CSL-dependent Notch signaling in the epidermis. DNMAML1 mice exhibited multiple skin defects including diffuse alopecia, epidermal hyperplasia, and hyperkeratinization. Surprisingly, these mice developed spontaneous lesions resembling human SCC and actinic keratoses, but did not develop BCC. In contrast to normal epidermis, keratinocytes and lesional cells from DNMAML1 mutant mice expressed nuclear β -catenin and cyclin D1 in a pattern similar to that observed in human cutaneous SCC, suggesting a conserved role for these molecules in SCC. Taken together, these data strongly suggest that functional interactions between Notch signaling and β -catenin and cyclin D1 play critical roles in the pathogenesis of cutaneous SCC.

Requests for reprints: Michael S. Parmacek, Department of Medicine, University of Pennsylvania, 9123 Founders Pavilion, 3400 Spruce Street, Philadelphia, PA 19104. Phone: 215-662-3140; Fax: 215-349-8017; E-mail: michael.parmacek@uphs.upenn.edu.
©2006 American Association for Cancer Research.
doi:10.1158/0008-5472.CAN-06-0793

Materials and Methods

Generation and characterization of SM22-Cre⁺/DNMAML1⁺ conditional transgenic mice. SM22-Cre transgenic mice, expressing Cre recombinase under the transcriptional control of the 2.8-kb mouse SM22 α promoter, have previously been described (19). DNMA11^{fl/fl} mice, heretofore designated as DNMA11⁺ conditional transgenic mice, expressing the DNMA11-enhanced green fluorescent protein (EGFP) fusion protein, were previously described (20). DNMA11⁺ mice in the FVBN background were intercrossed with SM22-Cre transgenic mice in the CD1 background, generating mice expressing DNMA11 under the transcriptional control of the SM22 α promoter, designated SM22-Cre⁺/DNMA11⁺, and control littermates lacking Cre recombinase, designated SM22-Cre⁻/DNMA11⁺, in a mixed FVBN/CD1 genetic background. For the cell fate mapping studies, SM22-Cre transgenic mice were intercrossed to the R26R indicator strain (21) and β -galactosidase activity was assessed in the informative offspring as previously described (19). To assess the endogenous pattern of SM22 α gene expression during mouse embryonic development, SM22 α -LacZ mice, in which the *LacZ* gene was knocked into the endogenous SM22 α allele (22), were harvested during embryonic development and stained for β -galactosidase activity as previously reported (19). All mouse experimentation was done under approved protocols from the University of Pennsylvania Animal Care and Use Committee and NIH guidelines.

Human tissue. Formalin-fixed, paraffin-embedded tissue samples of invasive SCC from skin were collected from the dermatopathology archives of the University of Pennsylvania Department of Dermatology with Internal Review Board approval under protocol 704450.

Immunohistochemistry and 5-bromo-4-chloro-3-indolyl- β -D-galactopyranoside staining. Mouse skin and tumor specimens fixed in 2% paraformaldehyde were subjected to either standard H&E staining or immunohistochemical staining with Texas red-conjugated secondary antibody and Hoechst counterstain. Primary antibodies used in the study include anti-GFP (1:100, Molecular Probes, Eugene, OR), anti- β -catenin (1:100, Sigma, St. Louis, MO), and anti-cyclin D1 (1:100, Santa Cruz Biotechnology, Santa Cruz, CA). 5-Bromo-4-chloro-3-indolyl- β -D-galactopyranoside (X-gal) staining of embryonic and adult tissue was done as described (19) with light eosin counterstain. Histology protocols may be assessed on the University of Pennsylvania Molecular Cardiology website at <http://www.uphs.upenn.edu/mcrc/histology/histologyhome.html>.

Results

Generation of conditional transgenic mice with epidermal-restricted inhibition of Notch signaling. To determine the function of CSL-dependent Notch signaling in skin, SM22-Cre transgenic mice were intercrossed with genetically engineered DNMA11⁺ mice, in which the cDNA encoding DNMA11 fused to GFP was knocked into the ROSA locus (20, 23). Our group and others have reported that during postnatal development, SM22 α promoter activity is restricted to vascular and visceral smooth muscle cells, including the smooth muscle-containing arrector pili muscle within adult skin (Fig. 1A, arrows; refs. 24, 25). Surprisingly, we also observed transient activity of the SM22 α promoter in the epidermis of the embryonic mouse at midgestation. At embryonic day (E)12.5, in SM22 α -LacZ embryos, in which the *LacZ* gene was "knocked in" to the endogenous SM22 α allele (22), β -galactosidase activity (blue stain) is clearly shown in the epidermis (Fig. 1C and E) but staining was not observed in control littermates (Fig. 1B and D). Consistent with these findings, intercrossing SM22-Cre transgenic mice with R26R-LacZ indicator mice, which provides a fate map of cells in which the SM22 α promoter was ever active, showed intense blue staining indicative of β -galactosidase activity in the epidermis of adult SM22-Cre⁺/R26R-LacZ⁺ progeny (Fig. 1G), which was not observed

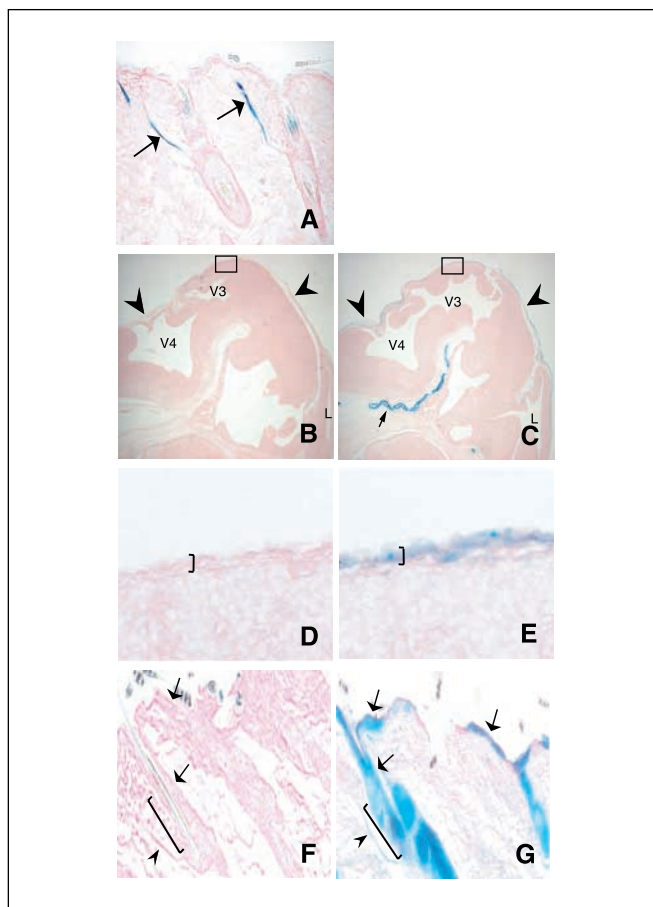


Figure 1. SM22 α promoter activity in embryonic skin directs Cre recombinase expression in keratinocytes required for normal adult skin homeostasis. A, X-gal staining of backskin from an adult SM22 α ^{+/LacZ} mouse (arrows, arrector pili). B to E, X-gal staining of cranial sections from day (E)12.5 SM22 α ^{+/+} (B) and SM22 α ^{+/LacZ} (C) littermate embryos. Arrowheads, surface epithelium. V4, V3, and L, fourth, third, and lateral ventricular spaces, respectively. C, arrow, basilar artery. Boxed regions in (B and C) are shown enlarged in (D and E), respectively, with brackets encompassing the surface epithelium. F and G, X-gal staining of backskin from control SM22-Cre⁻ × R26R (F) and SM22-Cre⁺ × R26R (G) mice in telogen phase. Staining of the interfollicular and follicular epidermis (arrows) and the bulge region (bracket) is shown. Arrowheads, arrector pili.

in littermate controls (Fig. 1F). Importantly, long-term *LacZ* expression was observed in both interfollicular (basal and supra-basal layers) and follicular (outer and inner root sheath) epithelium (Fig. 1G, arrows). Because stem cells within the basal epidermis and the bulge region associated with the hair follicle outer root sheath (Fig. 1F and G, brackets) are required for normal keratinocyte renewal and hair follicle cycling (26), these data show that prenatal *Cre* activation must occur in at least a subset of the proliferating epithelial cells destined to contribute to the adult epidermal stem cell population.

Characterization of SM22-Cre⁺/DNMA11⁺ mutant mice. When SM22-Cre transgenic mice were intercrossed with DNMA11 conditional transgenic mice, viable SM22-Cre⁺/DNMA11⁺ progeny were born in the anticipated Mendelian ratio. Beginning 2 to 3 weeks after birth, these mice exhibited diffuse loss of body hair and whiskers, and with further aging, hyperkeratinization of the tail was observed [Fig. 2A (top) and data not shown]. Alopecia progressed to near completion by 10 months of age (data not shown). Generalized growth retardation was also noted in

SM22-Cre⁺/DNMAML1⁺ mice. By contrast, SM22-Cre⁻/DNMAML1⁺ control littermates exhibited normal body hair and size (Fig. 2A, bottom). Immunohistochemical staining for GFP, indicative of expression of the DNMA11-GFP fusion protein, showed GFP expression (red color) in the follicular and interfollicular epidermis in SM22-Cre⁺/DNMAML1⁺ mice (Fig. 2E-G) but not in corresponding SM22-Cre⁻/DNMAML1⁺ skin (Fig. 2B-D). Of note, the keratinized surface of the skin generates a nonspecific fluorescent signal in both the control and mutant mice. These observations, together with the Cre recombinase fate mapping data described above (Fig. 1G), confirmed that SM22 α promoter-directed Cre recombinase expression results in epidermally restricted expression of DNMA11 that begins during midgestation and persists throughout postnatal development.

To examine cellular alterations in the skin of SM22-Cre⁺/DNMAML1⁺ mice, the backskin of mutant and control mice was biopsied and subjected to histologic analyses. Multiple aberrant features were observed in the skin of SM22-Cre⁺/DNMAML1⁺ mice including (i) hypoplastic dermis with increased cellularity, (ii) epidermal hyperplasia, (iii) keratin cyst formation, and (iv) aberrant hair follicle cycling (Fig. 3C and D). By contrast, none of these abnormalities was observed in the skin of SM22-Cre⁻/DNMAML1⁺ control littermates (Fig. 3A and B). Similar histologic findings have been reported in other mouse models of skin-deficient Notch signaling (10, 27–29), further substantiating the conclusion that DNMA11 represses Notch signaling in skin.

SM22-Cre⁺/DNMAML1⁺ mutant mice develop *de novo* SCC. As early as 6 months of age, most SM22-Cre⁺/DNMAML1⁺ mutant mice began to develop hyperkeratotic cutaneous nodules, with all SM22-Cre⁺/DNMAML1⁺ mice exhibiting multiple lesions by 10 months of age. Figure 4A shows a representative 8-month-old SM22-Cre⁺/DNMAML1⁺ mouse exhibiting exophytic hyperkeratotic lesions along the dorsal midline [Fig. 4A (lesion I) and B], near the proximal right upper limb [Fig. 4A (lesion II) and F] and near the

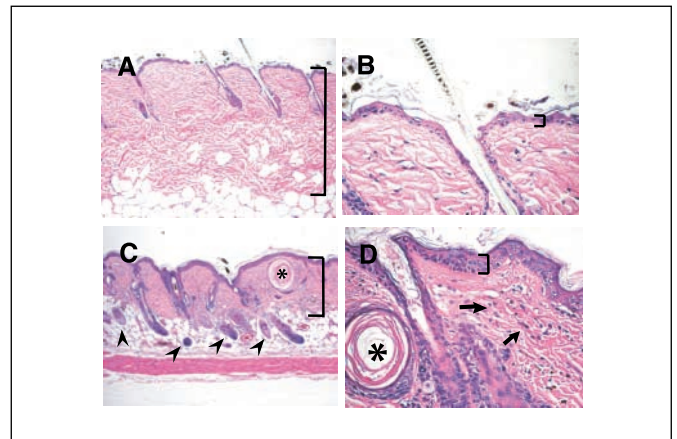


Figure 3. Adult SM22-Cre⁺/DNMAML1⁺ mice display both epidermal and follicular skin defects. H&E staining of backskin from SM22-Cre⁻/DNMAML1⁺ [A, low power ($\times 10$); B, high power ($\times 40$)] and SM22-Cre⁺/DNMAML1⁺ [C, low power ($\times 10$); D, high power ($\times 40$)] mice at telogen growth phase. Brackets, relative thickness of the dermis (A and C) and epidermis (B and D). Arrowheads, aberrant subdermal follicles; arrows, increased dermal cellularity. Asterisks, keratin cysts.

left foot [Fig. 4A (lesion III) and J]. Histologic examination of these keratinized masses revealed hyperproliferative keratinocytic lesions exhibiting cellular atypia and an invasive growth pattern diagnostic of SCC (Fig. 4C-E and G-I). In addition, microscopic examination of the foot lesion revealed intraepidermal keratinocyte dysplasia and parakeratosis, consistent with a precursor lesion resembling an actinic keratosis (Fig. 4J and K). To date, SCC lesions have been observed in 14 of 16 SM22-Cre⁺/DNMAML1⁺ mice with an average of two SCC lesions per mouse. Histologic analyses of additional, although infrequent, cutaneous masses in these mice revealed papillomas, inflamed infundibular cysts, and one cystic teratoma

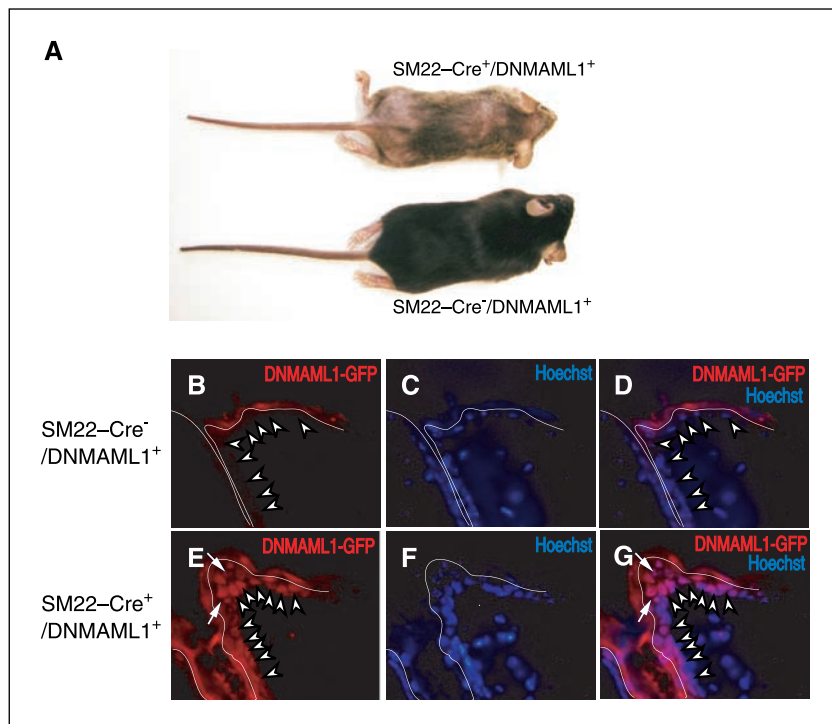
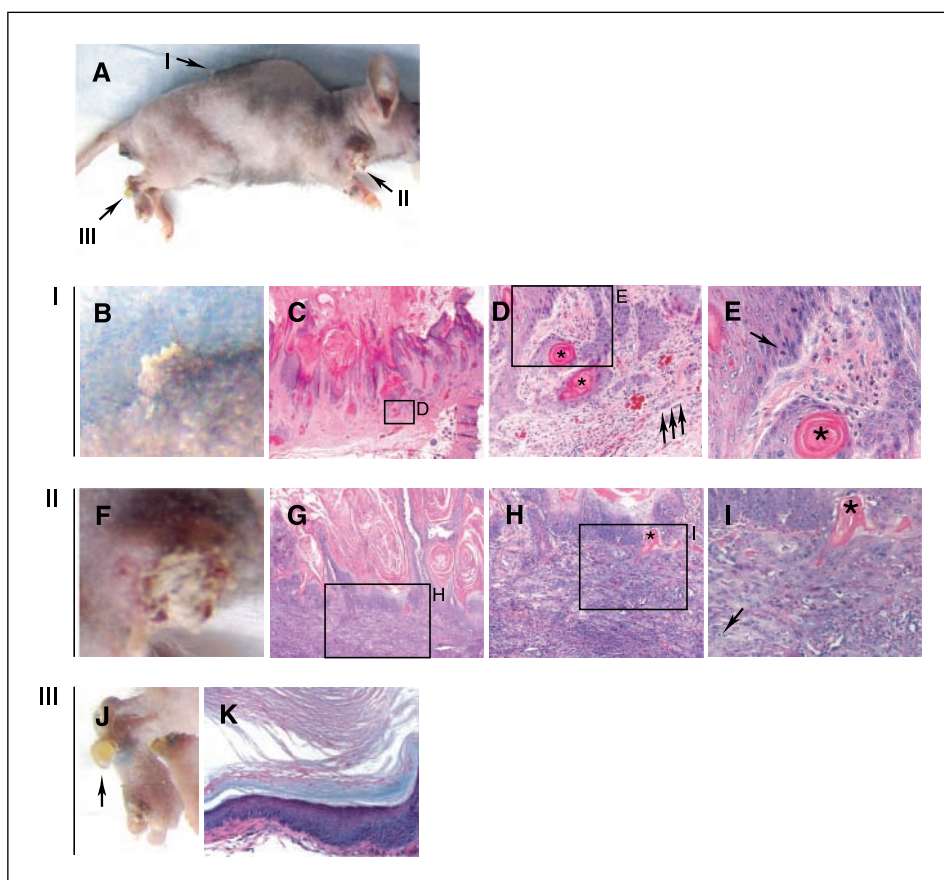


Figure 2. SM22-Cre⁺/DNMAML1⁺ mice display diffuse alopecia with epidermal expression of DNMA11-GFP. A, representative 8-week-old SM22-Cre⁺/DNMAML1⁺ mouse (top) and SM22-Cre⁻/DNMAML1⁺ littermate (bottom). The SM22-Cre⁺/DNMAML1⁺ mouse exhibits smaller body size in addition to patchy hair loss. B to G, immunohistochemical analysis of GFP-linked DNMA11 expression (red) in longitudinal sections of backskin from SM22-Cre⁻/DNMAML1⁺ (B-D) and SM22-Cre⁺/DNMAML1⁺ (E-G) mice. Blue, Hoechst nuclear counterstain. Arrowheads, interfollicular and follicular basal cells; arrows, suprabasilar keratinocytes. Drawn white contour lines delineate the cornified layer, which produces a background fluorescent signal artifact.

Figure 4. Notch signaling deficiency induces cutaneous SCC formation in mice. **A**, representative 8-month-old SM22-Cre⁺/DNMAML1⁺ mouse displaying multiple skin lesions (*I-III*) in addition to diffuse alopecia. **B** to **E**, gross view of lesion **I** (**B**) and H&E analyses under low power (**C**) and high power of boxed regions (**D** and **E**) displaying surface parakeratin, disorganized keratinocyte dysplasia with strands of infiltrating atypical squamous epithelial cells (**D**, *arrows*), keratin pearls (**D** and **E**, *asterisks*), and mitotic figures (**E**, *arrow*) consistent with SCC. **F** to **I**, gross view of lesion **II** (**F**) and H&E analyses under low power (**G**) and high power of boxed regions (**H** and **I**) displaying similar histologic features as lesion **I**, consistent with SCC. *Asterisks*, keratin pearl; *arrow*, mitotic figure. **J** and **K**, gross view of lesion **III** (**J**) and H&E analysis (**K**) showing abundant parakeratin with underlying suprabasilar epidermal expansion resembling actinic keratosis.



(data not shown). Remarkably, no BCCs were observed in the SM22-Cre⁺/DNMAML1⁺ mice.

Nuclear β -catenin accumulates in the epidermis of SM22-Cre⁺/DNMAML1⁺ mice and in human SCC. The development of cutaneous SCC in the SM22-Cre⁺/DNMAML1⁺ mice raised the mechanistic question of what alterations in downstream signaling pathways occurred in response to pan-Notch inhibition in the epidermis. Disruptions in Wnt/ β -catenin signaling have been implicated in the pathogenesis of cutaneous SCC (30–32). In addition, mice harboring an epidermal-restricted null mutation of Notch1 exhibited accumulation of nuclear β -catenin in their epidermis and spontaneously arising BCC (10). Therefore, to examine whether β -catenin signaling was altered in SM22-Cre⁺/DNMAML1⁺ mice, the cellular localization of β -catenin, a surrogate marker for β -catenin activation, was determined in the skin and tumor sections from SM22-Cre⁺/DNMAML1⁺ mice and littermate controls. The expected membrane-bound β -catenin (red signal), representing signaling inactive β -catenin, was observed in follicular and interfollicular epidermal cells in the skin of both control (Fig. 5A-C, *arrow*) and mutant mice (Fig. 5D-F, *arrow*). Membrane-bound β -catenin was also observed in SCC lesional cells of SM22-Cre⁺/DNMAML1⁺ mice (Fig. 6A, *arrow*). However, nuclear β -catenin (red signal), representing activated β -catenin, was observed only in the skin of SM22-Cre⁺/DNMAML1⁺ mutant mice (Fig. 5D and E, *arrowheads*) but not in the skin of control littermates (Fig. 5A-C). This was most pronounced in suprabasilar epidermal keratinocytes. Remarkably, accumulation of nuclear β -catenin in SCCs of SM22-Cre⁺/DNMAML1⁺ mice (Fig. 6A, *arrowheads*) was also seen in biopsies of human cutaneous SCC (Fig. 6B,

arrowheads). Taken together, these results suggest that β -catenin signaling is activated in *de novo* SCC arising in SM22-Cre⁺/DNMAML1⁺ mice, recapitulating observations made in human cutaneous SCC.

Cyclin D1 is up-regulated in the skin of SM22-Cre⁺/DNMAML1⁺ mice. Cyclin D1 is up-regulated by β -catenin signaling and has been shown to regulate entry into the cell cycle (33, 34). Given the increased β -catenin activation in cutaneous SCCs from both SM22-Cre⁺/DNMAML1⁺ mice and human tumors, we examined cyclin D1 gene expression in the skin of SM22-Cre⁺/DNMAML1⁺ mice and human biopsy samples of cutaneous SCC. In control mice, in which the epidermis typically lacks multiple suprabasilar layers, expression of cyclin D1 protein (red staining) was observed in the nucleus of basal epithelial cells, consistent with the proliferative properties of this undifferentiated cell layer (Fig. 5G-I, *arrowhead*). In the skin of SM22-Cre⁺/DNMAML1⁺ mice, nuclear basal cell expression of cyclin D1 was also observed. However, in the skin of mutant mice, cyclin D1 was enriched in the nuclei of suprabasilar epidermal cells (Fig. 5J-L, *arrowheads*). This observation is consistent with a model in which suprabasilar keratinocytes that normally differentiate fail to exit the cell cycle and continue to proliferate, thereby constituting an aberrant cell population.

Given these findings, we next examined whether cyclin D1 expression was altered in SCC lesions that arose spontaneously in the SM22-Cre⁺/DNMAML1⁺ mice. As shown in Fig. 6C, cyclin D1 was expressed in strands of lesional cells, strongly suggesting that there is an enhanced replicative pool of undifferentiated cells supporting tumor growth. Remarkably, this pattern of cyclin D1 accumulation was recapitulated in human SCC (Fig. 6D), suggesting a conserved

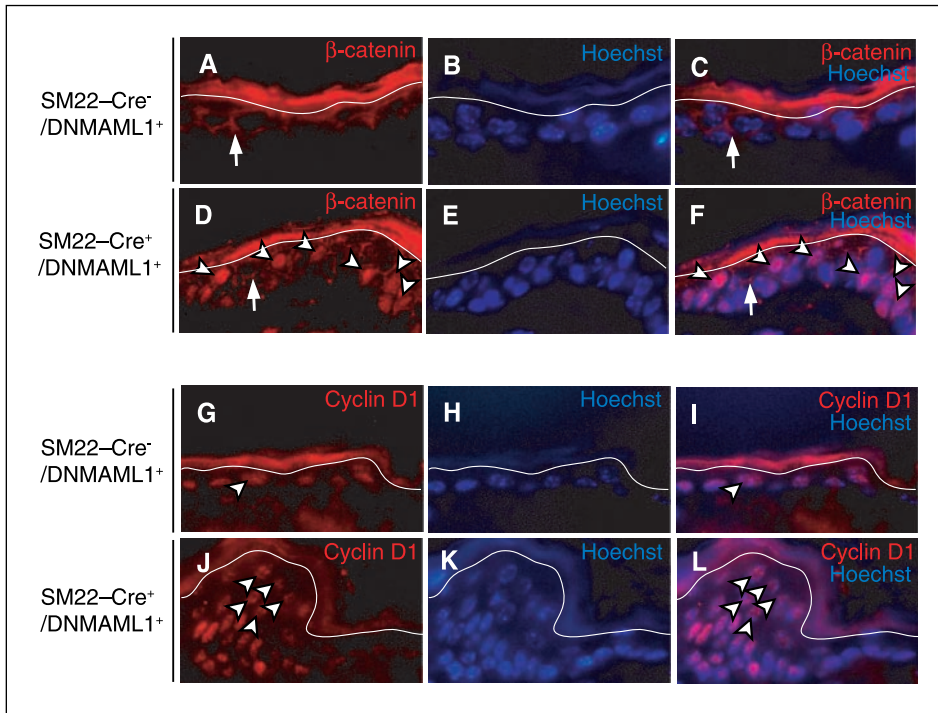


Figure 5. Notch signaling deficiency is associated with enriched epidermal nuclear β -catenin and cyclin D1 expression. *A to F*, immunohistochemical analyses comparing pattern of β -catenin expression in backskin from SM22-Cre⁻/DNMAML1⁺ (*A-C*) and SM22-Cre⁺/DNMAML1⁺ (*D-F*) mice. β -Catenin staining is shown in red and nuclei in blue (*Hoechst*). *Arrows*, cell membrane-bound β -catenin; *arrowheads*, nuclear β -catenin. Drawn white contour lines delineate cornified surface layer, which produces a background fluorescent signal artifact. *G to L*, immunohistochemical analyses showing pattern of cyclin D1 expression in backskin from SM22-Cre⁻/DNMAML1⁺ (*G-I*) and SM22-Cre⁺/DNMAML1⁺ (*J-L*) mice. Cyclin D1 staining is shown in red and nuclei in blue (*Hoechst*). *Arrowheads*, underlying basal cyclin D1 expression (*G* and *I*) and enriched expression in suprabasilar keratinocytes from SM22-Cre⁺/DNMAML1⁺ epidermis (*J* and *L*). Drawn white contour lines delineate cornified surface layer, which again produces a background fluorescent signal artifact.

functional role for cyclin D1 in the pathogenesis of SCC. Taken together, enhanced levels of nuclear β -catenin and cyclin D1 accumulation in SM22-Cre⁺/DNMAML1⁺ epidermis suggests a molecular model in which loss of CSL-dependent Notch activity promotes aberrant suprabasilar keratinocyte proliferation facilitating SCC formation. Furthermore, the presence of nuclear β -catenin and cyclin D1 expression in SCC may be important for sustained tumor growth.

Discussion

In this study, we determined that selective inhibition of Notch signaling in the epidermis results in the spontaneous formation of cutaneous SCC as well as its precursor lesion, actinic keratosis. To our knowledge, this is the first report linking inhibition of CSL-dependent Notch signaling with the *de novo* development of SCC. Moreover, in SM22-Cre⁺/DNMAML1⁺ mice, accumulation of nuclear β -catenin and up-regulation of cyclin D1 gene expression

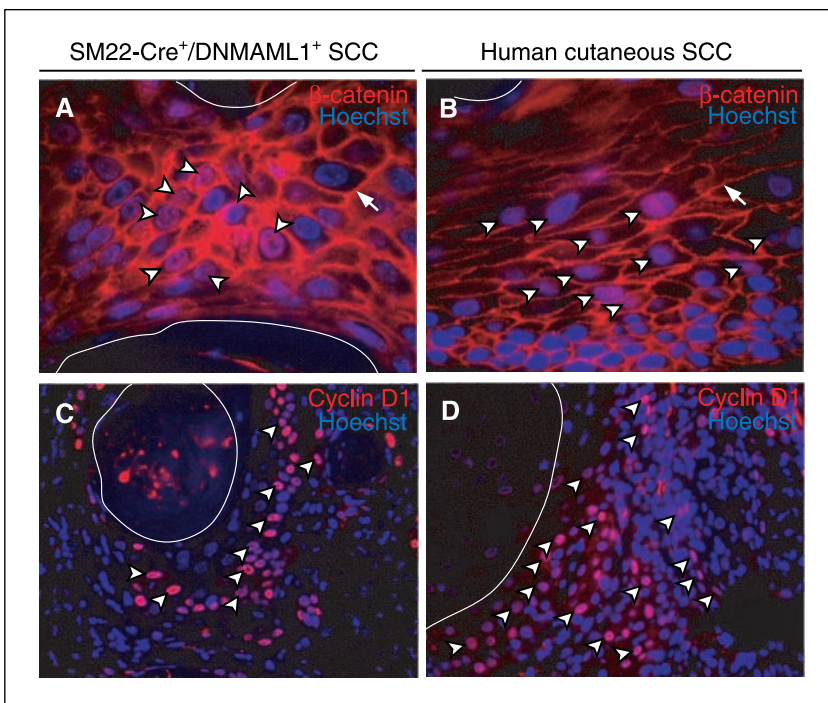


Figure 6. β -Catenin and cyclin D1 display similar expression patterns within cutaneous SCCs from SM22-Cre⁺/DNMAML1⁺ mice and humans. *A* and *B*, immunohistochemical analyses showing representative patterns of β -catenin expression in SCC from a SM22-Cre⁺/DNMAML1⁺ mouse (*A*) and spontaneous human SCC (*B*). β -Catenin staining is shown in red and nuclei in blue (*Hoechst*) under high power magnification. *Arrows*, cell membrane-bound β -catenin; *arrowheads*, nuclear β -catenin. Drawn white contour lines delineate border zones of keratin plugs. *C* and *D*, immunohistochemical analyses showing representative pattern of cyclin D1 expression in SCC from a SM22-Cre⁺/DNMAML1⁺ mouse (*C*) and in spontaneous human SCC (*D*). Cyclin D1 staining is shown in red and nuclei in blue (*Hoechst*) under low-power magnification. *Arrowheads*, cells expressing cyclin D1. Drawn white contour lines delineate border zones of keratin plugs as in (*A* and *B*).

were observed, findings recapitulated in biopsies of patients diagnosed with cutaneous SCC. These observations extend the proposed function of the Notch1 receptor as a tumor suppressor of BCC (10) and reveal that pan-inhibition of canonical Notch signaling promotes spontaneous SCC. Taken together, these observations strongly suggest that Notch signaling may play a critical role in the pathogenesis of both BCC and SCC, disease processes originating from epidermal cells that exhibit profoundly different clinical manifestations (12, 14).

Previous studies revealed that activation of Notch signaling blocks formation of human cervical, prostate, liver, and lung malignancies (for review, see ref. 11). By contrast, activation of Notch signaling leads to oncogenic transformation in human T-cell acute lymphoblastic leukemia and murine mammary tumors (35–37). It has also been recently reported that activation of Notch signaling promotes formation of human melanoma (38), a cutaneous malignancy with significant metastatic potential and a grave prognosis if not diagnosed early in its course (39). These apparent contradictory functions of Notch signaling show that the ultimate effect of Notch receptor activation and signaling is dependent on its precise cellular context. Notch signaling has been shown to influence cellular differentiation, proliferation, and survival in both physiologic and oncogenic contexts. Which of these variables are affected by loss of Notch signaling in SCC remains to be determined. Ultimately, elucidating the precise transcriptional targets of Notch in SCC will provide important insights into the ability of this pathway to protect against both SCC and precursor lesion development.

Insights into the molecular pathogenesis of cutaneous SCC are slowly emerging (17, 40, 41). Previous studies have shown that loss of nuclear factor κ B (NF- κ B) activity, through enhanced I κ B expression, or depletion of SMAD4 in murine skin confers susceptibility to SCC, in part, through promotion of unbalanced keratinocyte proliferation (41–46). The demonstration that inhibition of canonical Notch signaling also promotes *de novo* SCC suggests that combinatorial signaling pathways targeting the keratinocyte underlie the pathogenesis of cutaneous SCC. In this regard, it is noteworthy that hyperproliferative epidermis was observed in response to both disrupted NF- κ B and Notch signaling, suggesting that hyperproliferation of keratinocytes may play an obligatory role in the pathogenesis of cutaneous SCC or in some way predispose to malignant transformation of keratinocytes. Moreover, as in humans, actinic keratoses were observed in SM22-Cre⁺/DNMAML1⁺ mice, showing that inhibition of Notch signaling may underlie the pathogenesis of the premalignant lesion, as well as cutaneous SCC. As such, at least in this mouse model, Notch signaling seems to repress the premalignant lesion that gives rise to the malignant SCC lesion.

The observed accumulation of nuclear β -catenin in epidermal cells and its detection in SCCs observed in the SM22-Cre⁺/DNMAML1⁺ mutant mice supports previous studies showing that β -catenin signaling is regulated (i.e., repressed) directly or indirectly by Notch signaling (47, 48). Consistent with these findings, the demonstration that signaling-active β -catenin inhibits keratinocyte differentiation (49) and that enhanced levels of β -catenin are observed in SCC lesions (ref. 30 and references therein) supports a model wherein β -catenin-mediated Wnt signaling plays a critical role in malignant transformation of keratinocytes.

Understanding how inhibition of Notch1 in the skin gives rise to BCC while pan-inhibition of canonical Notch signaling in the

skin gives rise to *de novo* development of SCC is a fundamentally important question that should provide important insights into the molecular mechanisms that govern the behavior of these two common skin malignancies. Despite intense investigation in this area, CSL-dependent Notch target genes have not been clearly identified in adult epidermis *in vivo* (8). However, the finding that expression of the CSL-dependent Notch target genes, *HRT1*, *HRT2*, and *HRT3*, is down-regulated, and not induced, in vascular smooth muscle cells harvested from SM22-Cre⁺/DNMAML1⁺ mice (which express DNAMAML1 protein) exposed to Jagged1 ligand supports the conclusion that *de novo* formation of SCC resulted from perturbations in CSL-dependent Notch signaling (data not shown). In this regard, it is noteworthy that in the conditional Notch1-deficient mice, activated β -catenin, as well as increased levels of Gli2, a target of activated sonic hedgehog (SHH), was observed (10). In addition, decreased p21 levels were observed. Thus, it is tempting to speculate that the magnitude of β -catenin activation in response to Notch inhibition may differentially lead to BCC versus SCC. Indeed, the level of β -catenin signaling activity, in part, has been proposed to account for differences in tumor types derived from follicular keratinocytes (31, 50). Alternatively, inhibition of Notch1 function may activate and/or repress only a subset of the genes regulated directly or indirectly by the canonical Notch signaling pathway in keratinocytes, suggesting that specific Notch receptors expressed on the surface of the keratinocyte may mediate distinct and critical functions in restricting malignant potential.

To our knowledge, this is the first Notch-deficient murine model that develops *de novo* cutaneous SCC. It is noteworthy that this mouse model recapitulates multiple features of human SCC including (i) its association with hyperproliferative epidermis, (ii) association with precursor lesions (actinic keratoses), (iii) spontaneous development associated with increasing age, (iv) cellular histology and pathology, and (v) accumulation of nuclear β -catenin. Consistent with these findings, a previous study reporting the phenotype of mice harboring a conditional null mutation of the *CSL* gene selectively in the epidermis showed progressive loss of hair follicles and the generation of dermal keratin cysts (27). However, in contrast to SM22-Cre⁺/DNMAML1⁺ mice, spontaneous formation of SCC was not described in these mice (27). As inhibition of CSL and expression of DNAMAML1 protein should in theory both inhibit canonical Notch signaling, it remains unclear why SCC was not observed in these CSL conditional mutant mice. This difference could be related to differences in specificity of the promoter driving cell lineage-restricted Cre-mediated recombination (Nestin-Cre⁺ versus SM22-Cre⁺), timing of Cre-mediated excision, and/or efficiency of Cre excision. Nevertheless, because they recapitulate multiple aspects of human SCC, SM22-Cre⁺/DNMAML1⁺ mice should serve as a valuable animal model to elucidate the molecular basis of SCC and to evaluate novel therapeutic strategies.

Acknowledgments

Received 3/1/2006; revised 5/5/2006; accepted 5/22/2006.

Grant support: NIH PO1-HL075215 (M.S. Parmacek, W.S. Pear, S.E. Millar, and J. Seykora), NHLBI grant K08 HL079072-01 (A. Proweller), and Hematology Clinical Research training program grant T32HL007439-27 (L. Tu).

The costs of publication of this article were defrayed in part by the payment of page charges. This article must therefore be hereby marked *advertisement* in accordance with 18 U.S.C. Section 1734 solely to indicate this fact.

We thank Susan Pack for assistance with mouse surgery and Olga Shestova for assistance with DNAMAML1 genotyping.

References

1. Artavanis-Tsakonas S, Rand MD, Lake RJ. Notch signaling: cell fate control and signal integration in development. *Science* 1999;284:770-6.
2. Lai EC. Notch signaling: control of cell communication and cell fate. *Development* 2004;131:965-73.
3. Kadesch T. Notch signaling: the demise of elegant simplicity. *Curr Opin Genet Dev* 2004;14:506-12.
4. Weng AP, Aster JC. Multiple niches for Notch in cancer: context is everything. *Curr Opin Genet Dev* 2004;14:48-54.
5. Lai EC. Keeping a good pathway down: transcriptional repression of Notch pathway target genes by CSL proteins. *EMBO Rep* 2002;3:840-5.
6. Iso T, Kedes L, Hamamori Y. HES and HERP families: multiple effectors of the Notch signaling pathway. *J Cell Physiol* 2003;194:237-55.
7. Lefort K, Dotto GP. Notch signaling in the integrated control of keratinocyte growth/differentiation and tumor suppression. *Semin Cancer Biol* 2004;14:374-86.
8. Rangarajan A, Talora C, Okuyama R, et al. Notch signaling is a direct determinant of keratinocyte growth arrest and entry into differentiation. *EMBO J* 2001;20:3427-36.
9. Okuyama R, Nguyen BC, Talora C, et al. High commitment of embryonic keratinocytes to terminal differentiation through a Notch1-caspase 3 regulatory mechanism. *Dev Cell* 2004;6:551-62.
10. Nicolas M, Wolfer A, Raj K, et al. Notch1 functions as a tumor suppressor in mouse skin. *Nat Genet* 2003;33:416-21.
11. Radtke F, Raj K. The role of Notch in tumorigenesis: oncogene or tumour suppressor? *Nat Rev Cancer* 2003;3:756-67.
12. Rubin AI, Chen EH, Ratner D. Basal-cell carcinoma. *N Engl J Med* 2005;353:2262-9.
13. Bagheri MM, Safai B. Cutaneous malignancies of keratinocytic origin. *Clin Dermatol* 2001;19:244-52.
14. Alam M, Ratner D. Cutaneous squamous-cell carcinoma. *N Engl J Med* 2001;344:975-83.
15. Green CL, Khavari PA. Targets for molecular therapy of skin cancer. *Semin Cancer Biol* 2004;14:63-9.
16. Oro AE, Higgins KM, Hu Z, Bonifas JM, Epstein EH, Jr., Scott MP. Basal cell carcinomas in mice overexpressing sonic hedgehog. *Science* 1997;276:817-21.
17. Melnikova VO, Ananthaswamy HN. Cellular and molecular events leading to the development of skin cancer. *Mutat Res* 2005;571:91-106.
18. Tsai KY, Tsao H. The genetics of skin cancer. *Am J Med Genet C Semin Med Genet* 2004;131C:82-92.
19. Lepore JJ, Cheng L, Lu MM, Mericko PA, Morrisey EE, Parmacek MS. High-efficiency somatic mutagenesis in smooth muscle cells and cardiac myocytes in SM22 α -Cre transgenic mice. *Genesis* 2005;41:179-84.
20. Tu L, Fang TC, Artis D, et al. Notch signaling is an important regulator of type 2 immunity. *J Exp Med* 2005;202:1037-42.
21. Soriano P. Generalized lacZ expression with the ROSA26 Cre reporter strain. *Nat Genet* 1999;21:70-1.
22. Zhang JC, Kim S, Helmke BP, et al. Analysis of SM22 α -deficient mice reveals unanticipated insights into smooth muscle cell differentiation and function. *Mol Cell Biol* 2001;21:1336-44.
23. Wu L, Aster JC, Blacklow SC, Lake R, Artavanis-Tsakonas S, Griffin JD. MAML1, a human homologue of Drosophila mastermind, is a transcriptional co-activator for NOTCH receptors. *Nat Genet* 2000;26:484-9.
24. Li L, Miano JM, Cserjesi P, Olson EN. SM22 α , a marker of adult smooth muscle, is expressed in multiple myogenic lineages during embryogenesis. *Circ Res* 1996;78:188-95.
25. Kim S, Ip HS, Lu MM, Clendenin C, Parmacek MS. A serum response factor-dependent transcriptional regulatory program identifies distinct smooth muscle cell sublineages. *Mol Cell Biol* 1997;17:2266-78.
26. Khavari PA. Profiling epithelial stem cells. *Nat Biotechnol* 2004;22:393-4.
27. Yamamoto N, Tanigaki K, Han H, Hiai H, Honjo T. Notch/RBP-J signaling regulates epidermis/hair fate determination of hair follicular stem cells. *Curr Biol* 2003;13:333-8.
28. Pan Y, Lin MH, Tian X, et al. γ -secretase functions through Notch signaling to maintain skin appendages but is not required for their patterning or initial morphogenesis. *Dev Cell* 2004;7:731-43.
29. Vauclair S, Nicolas M, Barrandon Y, Radtke F. Notch1 is essential for postnatal hair follicle development and homeostasis. *Dev Biol* 2005;284:184-93.
30. Xia X, Qian S, Soriano S, et al. Loss of presenilin 1 is associated with enhanced β -catenin signaling and skin tumorigenesis. *Proc Natl Acad Sci U S A* 2001;98:10863-8.
31. Niemann C, Owens DM, Hulsken J, Birchmeier W, Watt FM. Expression of Δ Nle1 in mouse epidermis results in differentiation of hair follicles into squamous epidermal cysts and formation of skin tumours. *Development* 2002;129:95-109.
32. Bhatia N, Spiegelman VS. Activation of Wnt/ β -catenin/Tcf signaling in mouse skin carcinogenesis. *Mol Carcinog* 2005;42:213-21.
33. Shtutman M, Zhurinsky J, Simcha I, et al. The cyclin D1 gene is a target of the β -catenin/LEF-1 pathway. *Proc Natl Acad Sci U S A* 1999;96:5522-7.
34. Tetsu O, McCormick F. β -Catenin regulates expression of cyclin D1 in colon carcinoma cells. *Nature* 1999;398:422-6.
35. Weng AP, Ferrando AA, Lee W, et al. Activating mutations of NOTCH1 in human T cell acute lymphoblastic leukemia. *Science* 2004;306:269-71.
36. Ellisen LW, Bird J, West DC, et al. TAN-1, the human homolog of the Drosophila notch gene, is broken by chromosomal translocations in T lymphoblastic neoplasms. *Cell* 1991;66:649-61.
37. Dievert A, Beaulieu N, Jolicoeur P. Involvement of Notch1 in the development of mouse mammary tumors. *Oncogene* 1999;18:5973-81.
38. Balint K, Xiao M, Pinnix CC, et al. Activation of Notch1 signaling is required for β -catenin-mediated human primary melanoma progression. *J Clin Invest* 2005;115:3166-76.
39. Rager EL, Bridgeford EP, Ollila DW. Cutaneous melanoma: update on prevention, screening, diagnosis, and treatment. *Am Fam Physician* 2005;72:269-76.
40. Black AP, Ogg GS. The role of p53 in the immunobiology of cutaneous squamous cell carcinoma. *Clin Exp Immunol* 2003;132:379-84.
41. Dajee M, Lazarov M, Zhang JY, et al. NF- κ B blockade and oncogenic Ras trigger invasive human epidermal neoplasia. *Nature* 2003;421:639-43.
42. Qiao W, Li AG, Owens P, Xu X, Wang XJ, Deng CX. Hair follicle defects and squamous cell carcinoma formation in Smad4 conditional knockout mouse skin. *Oncogene* 2005.
43. van Hogerlinden M, Rozell BL, Toftgard R, Sundberg JP. Characterization of the progressive skin disease and inflammatory cell infiltrate in mice with inhibited NF- κ B signaling. *J Invest Dermatol* 2004;123:101-8.
44. van Hogerlinden M, Rozell BL, Ahrlund-Richter L, Toftgard R. Squamous cell carcinomas and increased apoptosis in skin with inhibited Rel/nuclear factor- κ B signaling. *Cancer Res* 1999;59:3299-303.
45. Seitz CS, Lin Q, Deng H, Khavari PA. Alterations in NF- κ B function in transgenic epithelial tissue demonstrate a growth inhibitory role for NF- κ B. *Proc Natl Acad Sci U S A* 1998;95:2307-12.
46. Lind MH, Rozell B, Wallin RP, et al. Tumor necrosis factor receptor 1-mediated signaling is required for skin cancer development induced by NF- κ B inhibition. *Proc Natl Acad Sci U S A* 2004;101:4972-7.
47. Devgan V, Mammucari C, Millar SE, Brisken C, Dotto GP. p21WAF1/Cip1 is a negative transcriptional regulator of Wnt4 expression downstream of Notch1 activation. *Genes Dev* 2005;19:1485-95.
48. Hayward P, Brennan K, Sanders P, et al. Notch modulates Wnt signalling by associating with Armadillo/ β -catenin and regulating its transcriptional activity. *Development* 2005;132:1819-30.
49. Zhu AJ, Watt FM. β -Catenin signalling modulates proliferative potential of human epidermal keratinocytes independently of intercellular adhesion. *Development* 1999;126:2285-98.
50. Gat U, DasGupta R, Degenstein L, Fuchs E. *De novo* hair follicle morphogenesis and hair tumors in mice expressing a truncated β -catenin in skin. *Cell* 1998;95:605-14.