

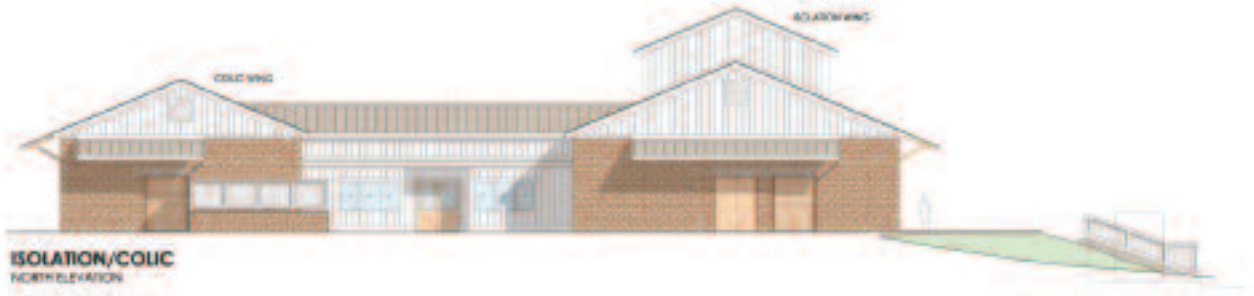


4-1-2008

New Bolton Center Plans for the Future

Brenda Lowen
University of Pennsylvania

New Bolton Center Plans for the Future



Last year, Penn Vet selected SRG Partnership, Inc., to develop master development plans for the School's New Bolton Center and West Philadelphia campuses. The master planning work for the 850-acre New Bolton Center, located west of Philadelphia in Chester County, has been completed, and the School is ready to begin Phase 1—the construction of a new Isolation & Colic Barn.

This state-of-the-art facility will be located on a bio-secure site area on the service drive between the Myrin Building and the Neonatal Intensive Care Unit. It will have two wings, one with ante-chambers dedicated to isolation cases, and one for colic cases. Each wing will have a procedure room and be attached to a common headhouse, or central staffing area. The building will be

constructed using the new design guidelines generated by the master plan, which focus on low-maintenance, durable materials in keeping with the Chester County farm vernacular.

In addition, this first phase will include the construction of Pennsylvania's first tissue digester, which features a technology that is superior to incineration and will provide a valuable resource in the event of disease outbreak in the surrounding area.

Both facilities will begin construction in late June 2008 with completion by September 2009.

—BRENDA LOWEN, PROJECT MANAGER
PENN FACILITIES AND REAL ESTATE SERVICES

Plan of the proposed Isolation Colic Barn at New Bolton Center.

